



# Versana Premier™

Easy to use. Easy to learn. Easy to diagnose.



Some innovations feel so natural from the start,  
you wonder how you ever lived without them



# Versana Premier

Easy to use. Easy to learn. Easy to diagnose.

Investing in and introducing a new ultrasound system to your practice can be a significant and challenging decision. Versana Premier helps clinicians enjoy the sophisticated yet familiar simplicity of an ultrasound system that feels natural from the start, making it easier than ever to deliver quality care to a wide range of patients every day.


Easy to use and easy to learn, Versana Premier lets clinicians easily and confidently diagnose a wide spectrum of patient conditions. Whether you're working in a women's health center, general practice office, health checkup or other site offering OB/GYN care, you can count on Versana Premier as a reliable and user-friendly ultrasound system designed to empower clinicians, enhance their efficiency, and provide optimal care, all with effortless productivity in mind.





# Easy to use

From its design to its automated tools to its reliable service and support, Versana Premier delivers an effortless user experience.


## Transform your workflow and accelerate scanning with Versana Whizz Automation; which is an advanced intuitive feature

 Experience up to 38% faster workflow with *Whizz clinical features*, saving time and simplifying workflow with Dynamic Image Tuning and enhance color follow signal<sup>1</sup>

 Create your own report templates with *Whizz Report* and import and display clinical guidelines for references while scanning with *Whizz Notes*

 Use new on-console features, such as *Whizz-Assistant*, to fit seamlessly into your daily routine

## Advanced design and capabilities to simplify operations and meet the needs of your practice and patients

 Easily move the system around your facility with its portable design that is equipped with enhanced ergonomic updates, improved accessory management, and extended battery-powered scanning



# Easy to learn

Versana Premier offers an array of clinical and product education resources to help you and your staff master the system quickly, broaden your range of exam capabilities, and spend more quality time with your patients.

Robust educational support, advanced tools, & reliable service provide a comprehensive solution for users' practices both now & in the future



Completely backed by GE HealthCare for education and service with *Versana Club*, *My Trainer*, and *eDelivery*



1 — Maximize your efficiency and train new users with built-in reference and guidance tools, including *Scan Assistant*, *Scan Coach*, and *Scan Coach Voice Comments*




*My Trainer* on-board help walks you through the setup, operation, cleaning and maintenance of your Versana ultrasound system. It helps you get started with your Versana system quickly




# Easy to diagnose


Powered by *VisionBoost Architecture*, Versana Premier is designed to provide optimal imaging and tools needed to perform broad range of common OB/GYN examinations, so that users can accurately make decisions and reach a diagnosis with the greatest of ease.


## Capture exceptional images with advanced clinical features to address challenging cases across clinical specialties and care areas


 Dynamically optimize images while scanning with *Whizz-Image Tuning* clinical features and easily improve Color Doppler with *Whizz Color Flow*


 Shift between Smooth Mode and Sharp Mode to view image features as preferred with *Whizz Easy Style*


## Reduce your scan time with automated productivity and simplified fetal measurement tools

 Make automated 2D measurements with *SonoBiometry* and *Volume Calculations* and *Auto Contour* for easy measurement, which seamlessly populate to report

 Record fetal growth data and structure descriptions using *Fetal Growth Curves* or charts to easily compare current and prior exams to track fetal development

 Assess breast nodules with the *Breast Productivity Package* leveraging BI-RADS® Criteria

 Easily compare current and prior exams and track treatment progress with *Follow-Up Tool*

 Quickly detect follicles and analyze their shape, volume and diameter with *Whizz Follicle* which then automatically populate into the report



Leverage a wide range of transducers\*, including new IC9-RS, which produces high resolution images for OB/GYN care

# 3D/4D technologies

Simply place the probe to get the information you need, without time-consuming modifications.

## Capture exceptional images with advanced clinical features to address challenging cases across clinical specialties and care areas



See faster *3D/4D Renderings\** supported by an updated graphic and processing unit



Effortlessly obtain the render start position with *Whizz RenderLive* to easily separate solid tissue in front of rendered objects for Static 3D/4D imaging



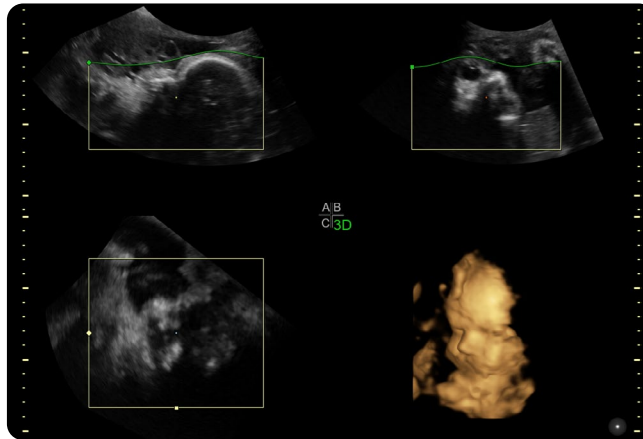
Put bigger smiles on patient faces with *V-Live 2.0* which gives you beautiful images that allow you to clearly follow baby's development



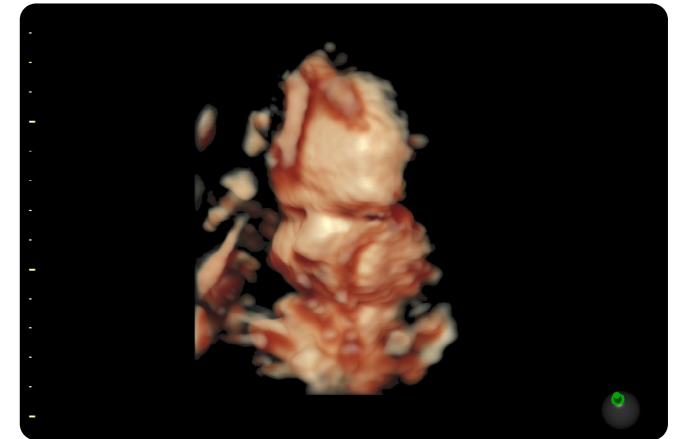
Use *Static 3D/4D Volume Imaging* to obtain anatomical views not possible with 2D scanning alone



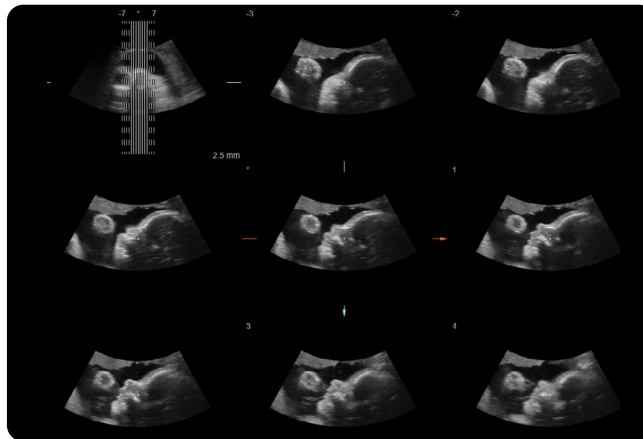
Use *Tomographic Ultrasound Imaging (TUI)* to assess multiple parallel slices of a volume with a single touch or *Virtual Organ Computer-aided Analysis (VOCAL)* to visualize and calculate the volume of structures



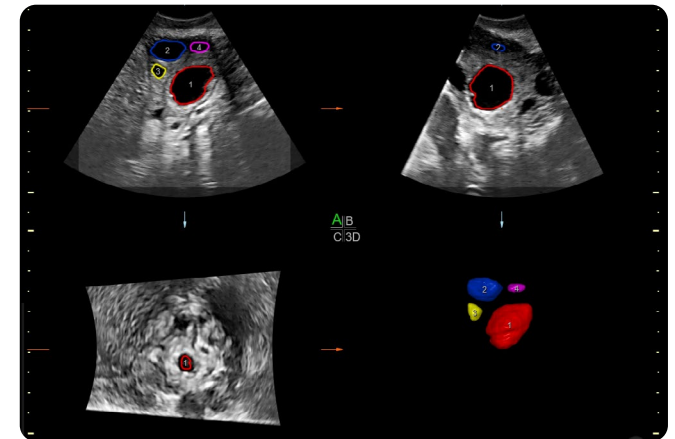
Quickly obtain rendering position for easy visualization



Enhance static 3D and 4D images with a flesh tone and light source to highlight darkened area

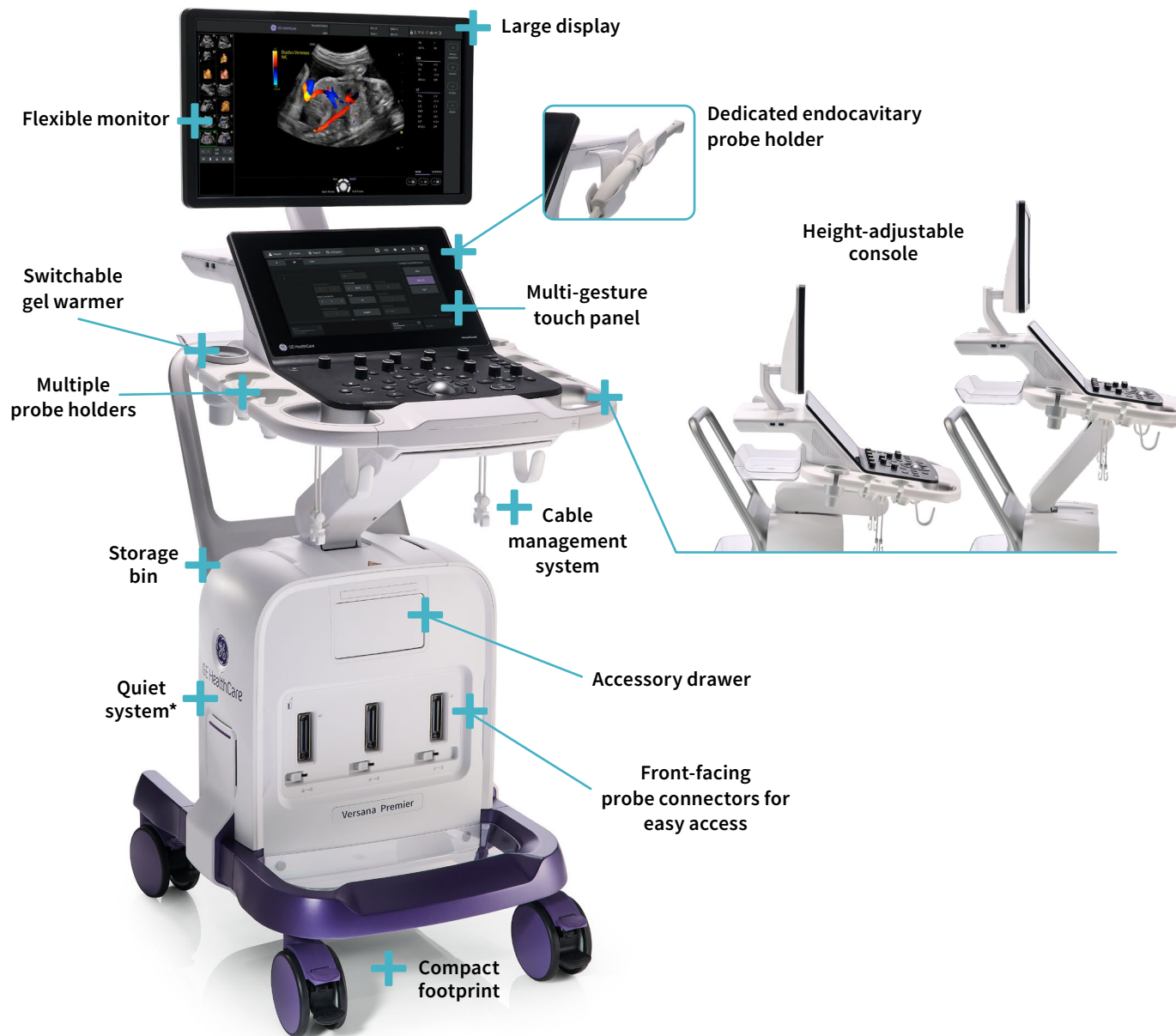


TUI obtains an automated display of the volume in parallel slices



Measure unlimited volumes in fewer keystrokes

## Ergonomics & hardware updates



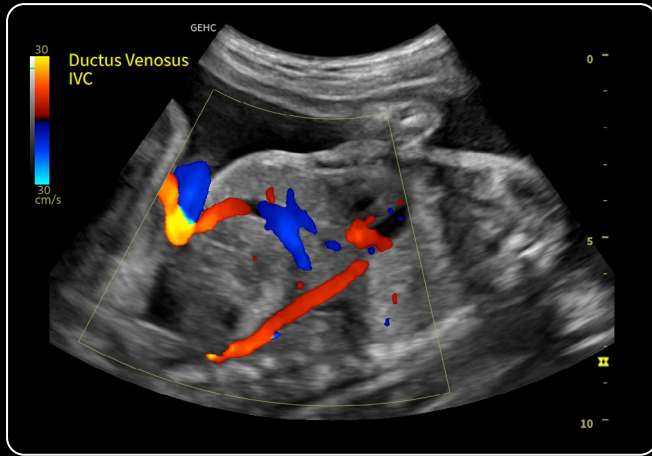
## Versana Premier

is an intelligently productive, user-friendly ultrasound system with multiple exam protocols, tools, and advanced applications to streamline processes so it's easier than ever for you to deliver quality care to your wide range of patients every day.

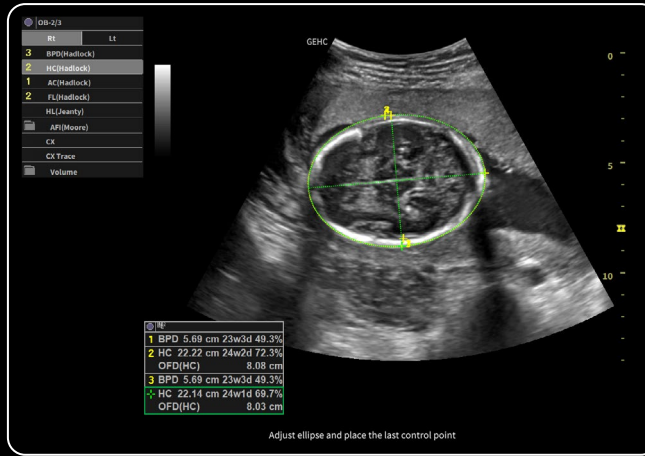


\*Decibel range of 21.96 to 39.51.  
Equivalent to Versana Premier V2

# Image gallery



RAB2-6-RS Fetal Circulation with Color Flow



4C-RS Whizz Easy Style with SonoBiometry BPD



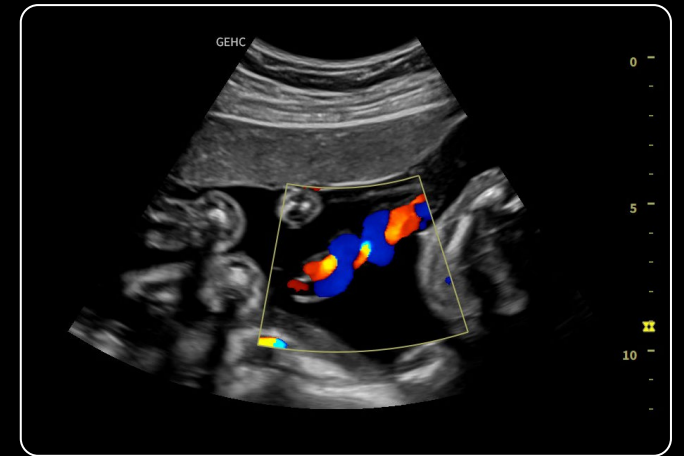
RAB2-6-RS Static 3D face with V-Live 2.0



C1-5-RS Four Chamber Heart



RAB2-6-RS Fetal profile



RAB2-6-RS umbilical with color Doppler

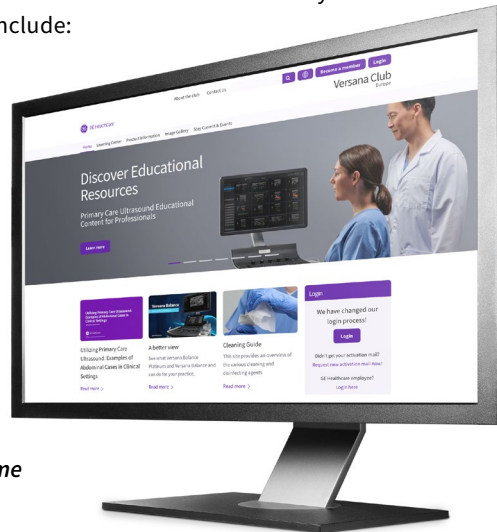
# Familiar from day one

An ultrasound solution making the delivery of quality patient care easier than ever before

## Advance your ultrasound skills with Versana Club

No matter your skill level, you can learn to harness the full power of your Versana Premier system with a membership in the Versana Club. The Versana Club offers resources to help you build your skills, network with others and share your ultrasound knowledge. Membership perks include:

- Image-sharing with peers around the world
- Web-based video tutorials and other educational offerings
- Information on Versana service solutions and products
- Articles on ultrasound and patient care



Register now at  
[www.versanaclub.net/emea/home](http://www.versanaclub.net/emea/home)

## Customized solutions and path to growth

Versana Premier can scale to suit your practice today and grow with you. Select a basic console and software. Then choose from a variety of optional upgrades as your practice advances

## Experience the strength of the GE HealthCare family

Your support team is fully trained, GE HealthCare qualified, deeply experienced, and nearby.

- Expert support during and after purchase
- In-depth staff product training



Versana  
Essential™

Versana  
Premier™

Versana  
Balance™

Versana  
Active™





1. GE HealthCare-sponsored usability study, using Whizz. Study was conducted in December 2022. JB24263XX

© 2025 GE HealthCare. BI-RADS is a trademark of the American College of Radiology. Versana Active, Versana Essential, Versana Balance, Versana Premier are trademarks of GE HealthCare. GE is a trademark of General Electric Company used under trademark license. JB01433AFG

Commercial availability of GE HealthCare medical systems is subject to meeting local requirements in a given country or region. Contact a GE HealthCare Representative for more information.

Intended for healthcare professionals only.

March 2025



One of the most prestigious design competitions in the world, the iF DESIGN AWARD has recognized design excellence worldwide since 1954.

